



Unconventionals Analyst for ArcGIS

Phillip Hicken VP Software Sales N America

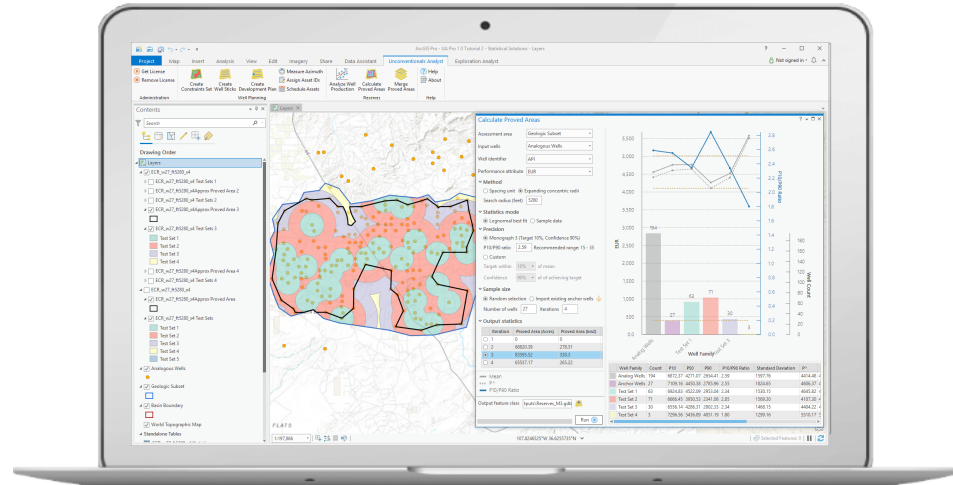
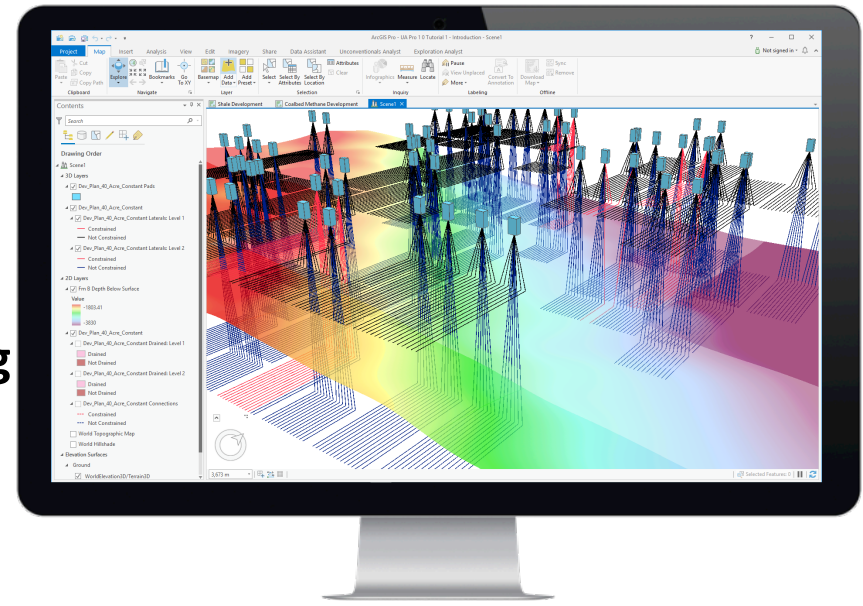
3000 Wilcrest Drive | Suite 155 | Houston | TX 77042 | USA

Desk: +1 713 979 9900 | phillip.hicken@getech.com | www.exprodat.com



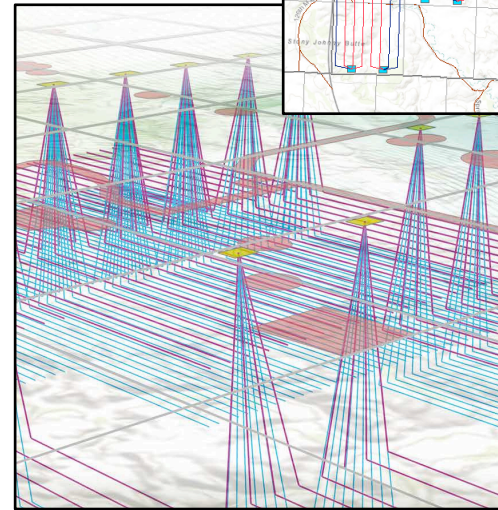
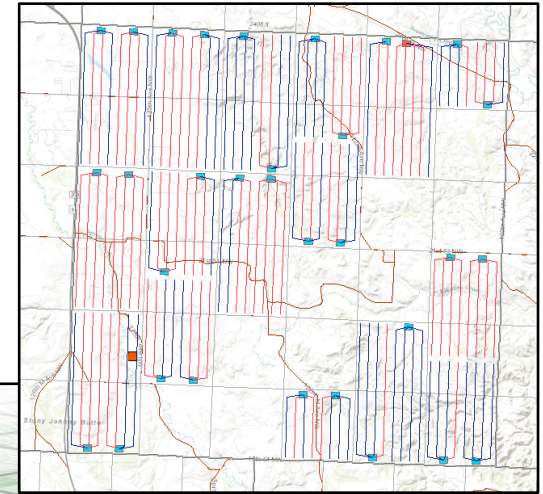
What is Unconventionals Analyst?

- Tool for making unconventional well planning and reserve area mapping easy
- Runs inside Esri's ArcMAP & ArcGIS Pro
- Contains specific workflows for managing continuous resource play developments
 - Shale Oil / Shale Gas
 - Coal Bed Methane / Coal Seam Gas
 - Tight sand
- Very easy-to-use
 - Designed for geoscientists & reservoir engineers
 - "Install and go"
 - Data agnostic

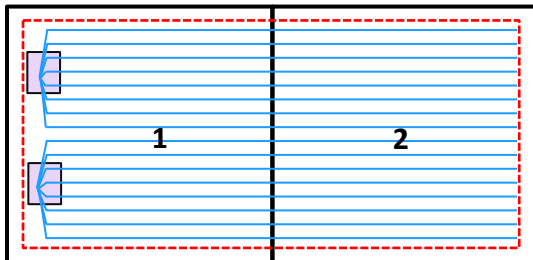


Create Development Plans

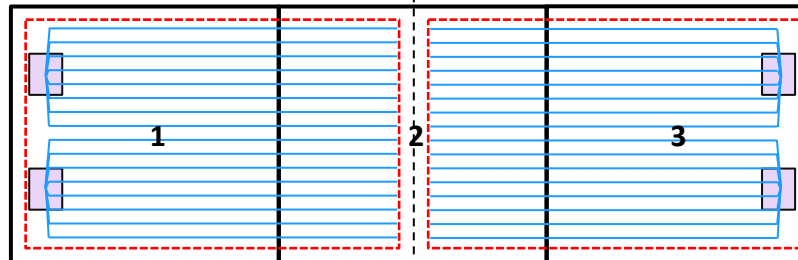
- Automatically calculates the minimum number of pads and laterals to maximize drainage.
- Create Well Pads and Laterals across sets of contiguous Sections or Leases.
- Include existing pads, laterals & infrastructure.
- Avoid Surface & Sub-surface constraints.
- Mixture of Long, Medium and Short lateral scenarios
- Visualise data in 3D



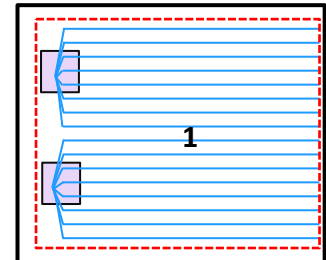
Long length (2 sections)



Medium length (1.5 sections)

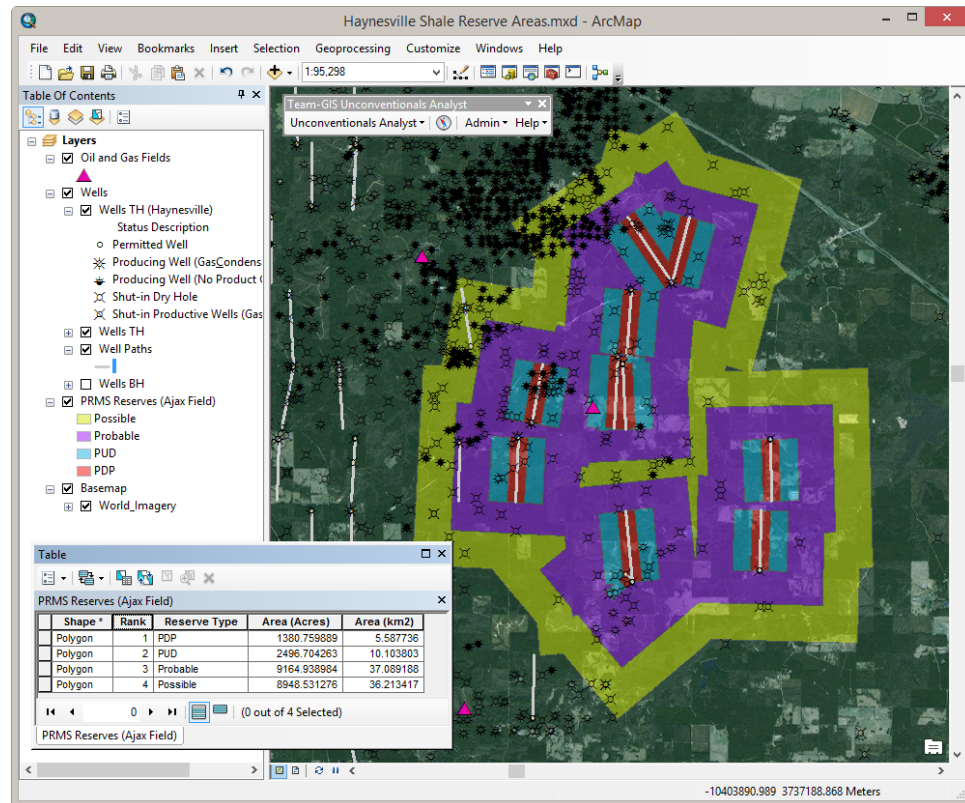


Short length (1 section)



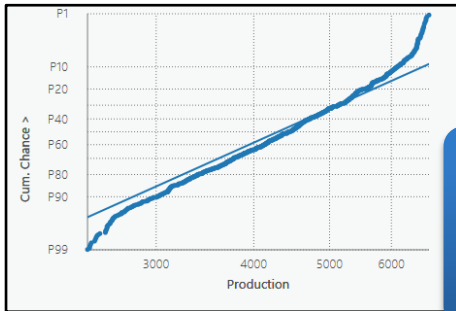
Calculate Deterministic Reserve Areas

- Vertical and horizontal wells
- Highly customizable to use any type of reserve classification
- Use well locations to calculate reserve classification areas
 - 1P, 2P, 3P, etc.
 - PDP, PUD, Possible, etc.
 - Final areas in Acres and Km²
- Reserve scheme support
 - PRMS, NSAI, SPEE, user-defined



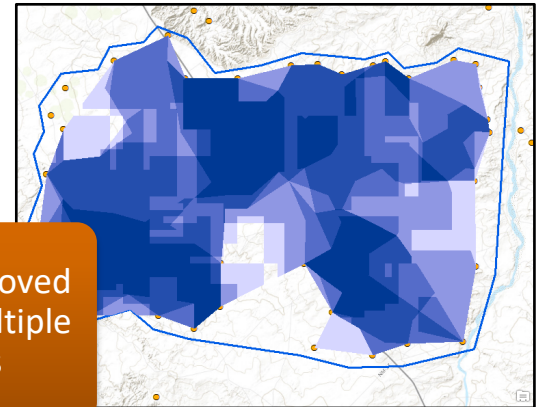
Calculate Probabilistic Reserve Areas

“Monograph 3” Workflow



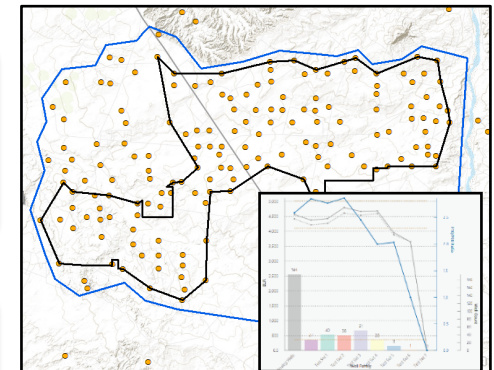
1. Calculate statistics for Analogous wells in Geologic subset

6. Overlay “proved areas” for multiple iterations



2. Randomly select set of Anchor wells

5. Interpret results to define proved area



3. Create Test Sets at DSU/ECR spacings away from Anchor wells

4. Select wells in each Test Set and calculate Test Set statistics



Selection of our software customers





Come and see us at Booth
#142 for a demo and to pick
up a discount voucher!

Follow Exprodat

