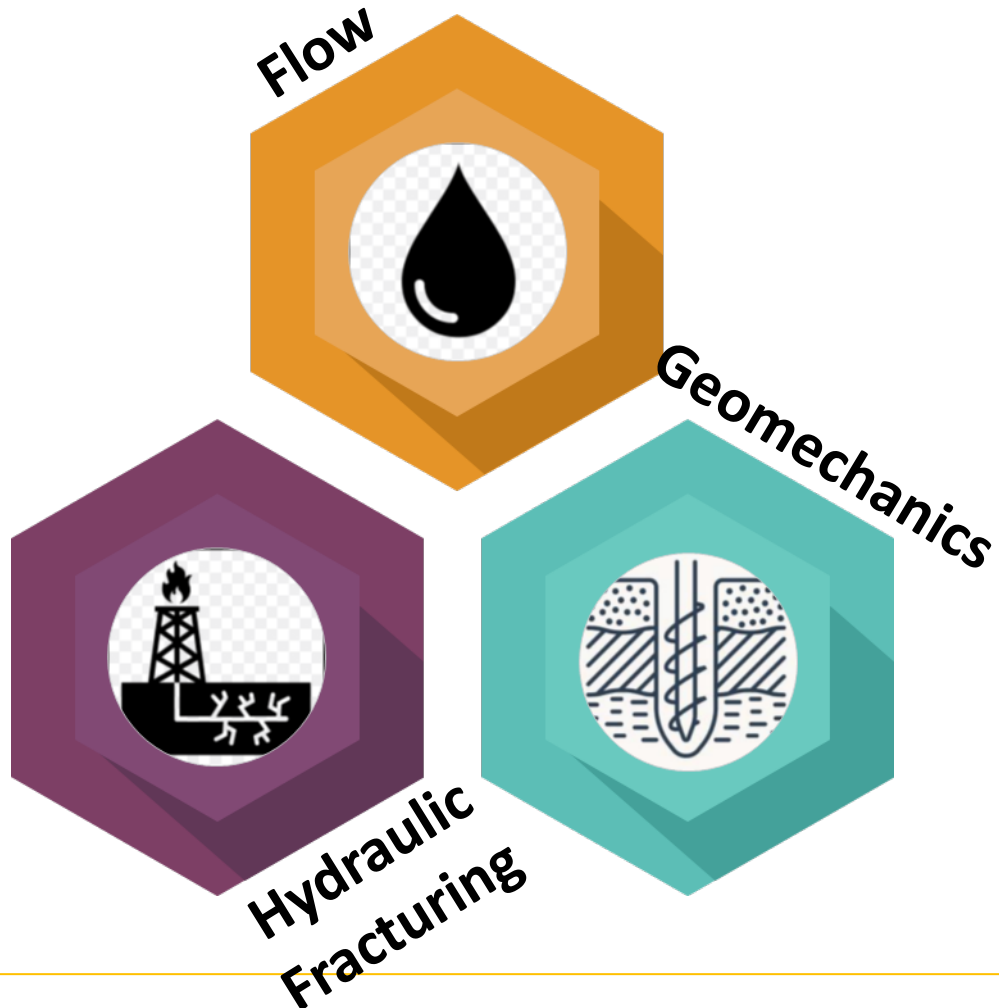




OpenSim Technology

Adolfo Rodriguez
adolfo@opensim.technology

Description / Image of the Product



OpenSim:

- **Integrated Reservoir Simulator** with similar capabilities of Eclipse Black-Oil and/or Compositional Simulators.
- Fully integrated with **Geomechanics and Hydraulic Fracturing** Simulation.
- Easy to customize and integrate into customer's workflows.
- **Validated** with several public domain benchmark cases

Team Members & Brief Bios

-



- Adolfo Rodriguez, Co-Founder
- PhD Physics
- 20 years experience in Geomechanics
- Past work: ConocoPhillips, UT-Austin, PDVSA

-

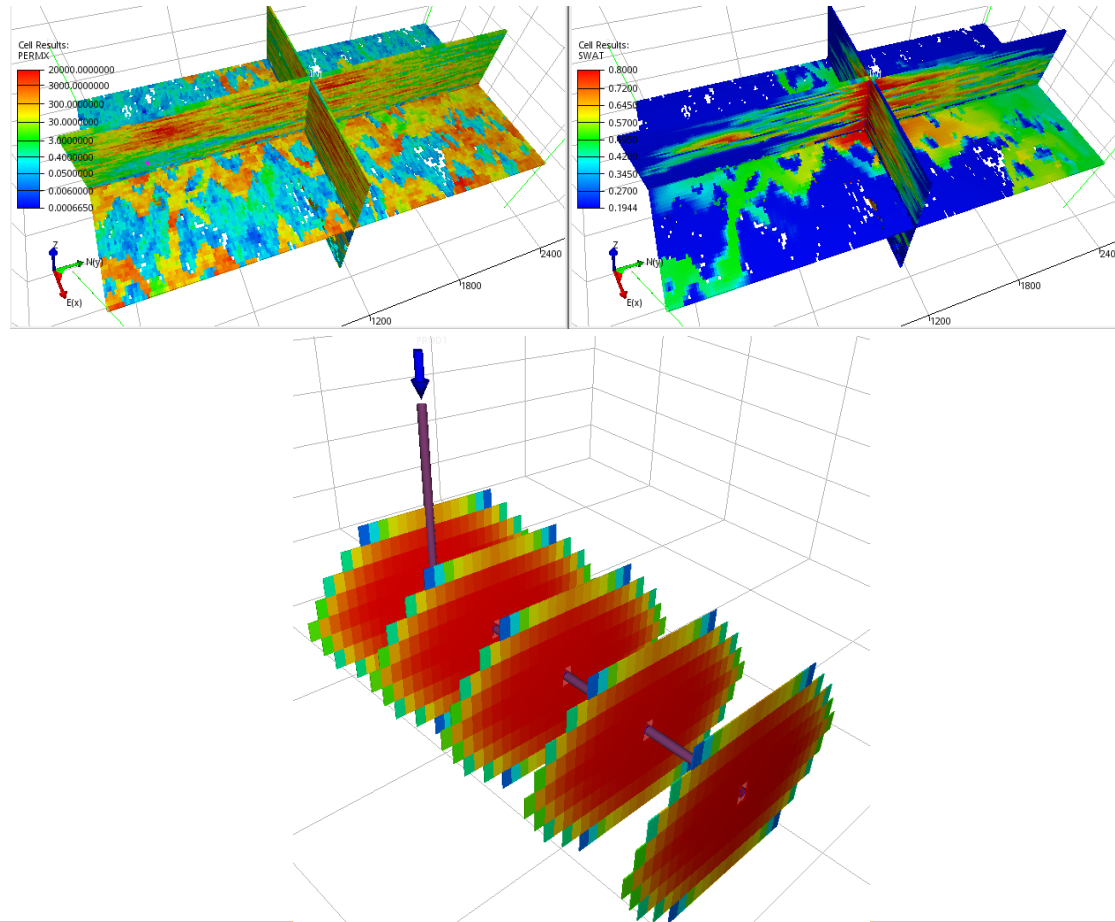


- Jorge Monteagudo, Co-Founder
- MSc, PhD Chem. Eng.
- 20 years experience in Reservoir Simulation
- Past work: ConocoPhillips, RERI, PetroPeru

-



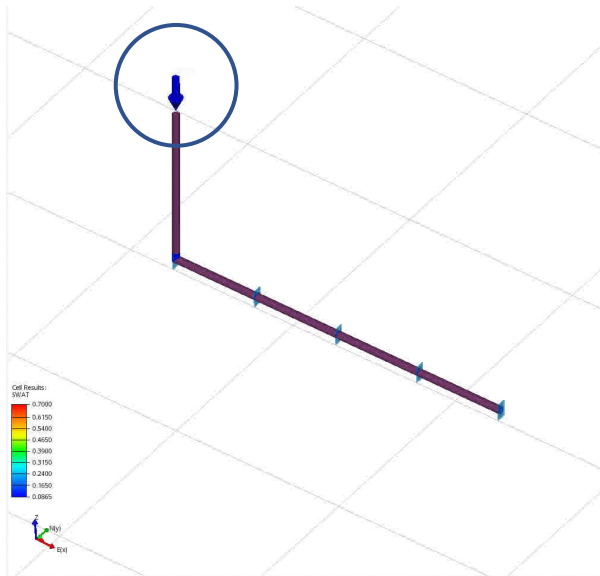
- Nathalie Nieto, IT Support
- BSc Computer Science
- 8 years experience as Java consultant
- Past work: TCS Consulting Solutions, Mobile-Globe (France)



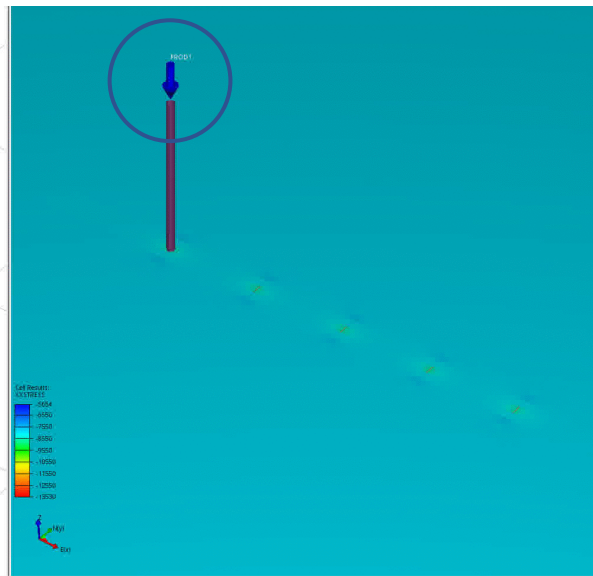
To develop state-of-the-art tools for Reservoir Simulation, Geomechanics and Hydraulic Fracturing with focus on integration, flexibility and short innovation cycles.

What we want to achieve

Water Saturation



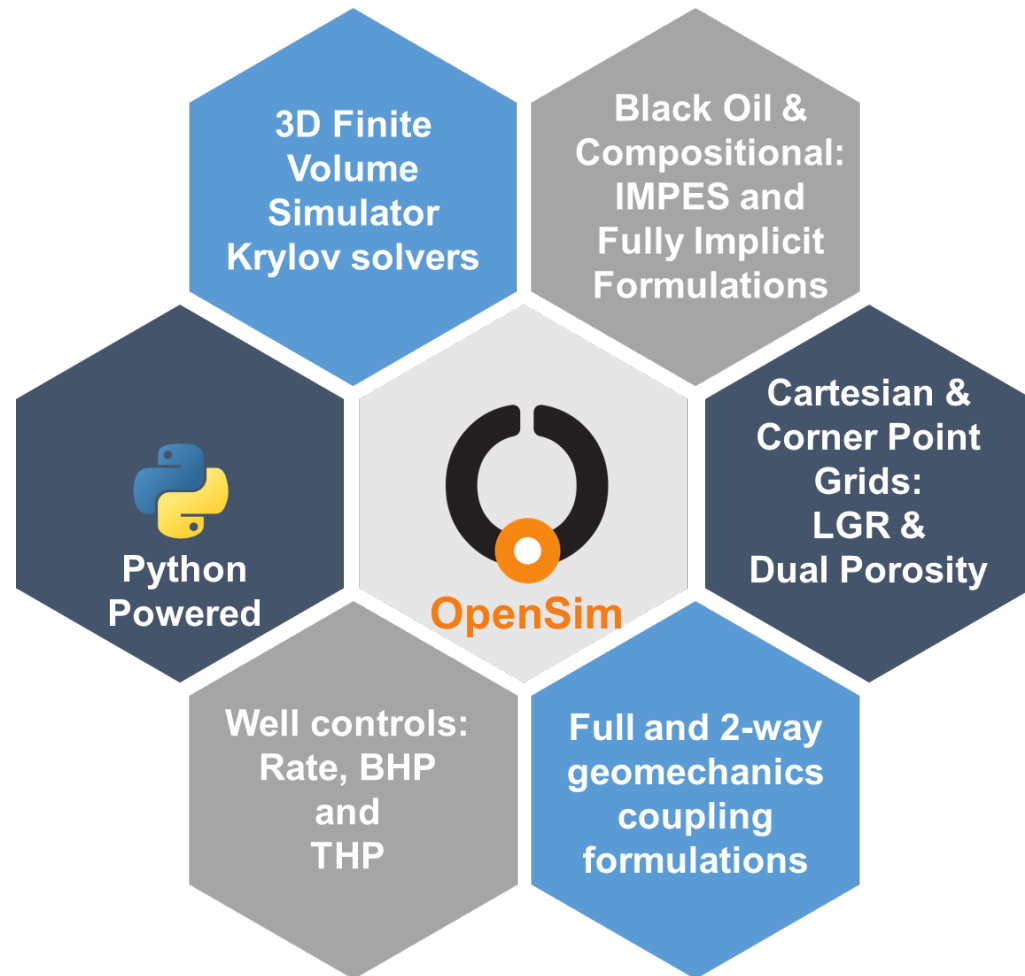
Stress in the x-direction



Fracturing-to-production Simulation

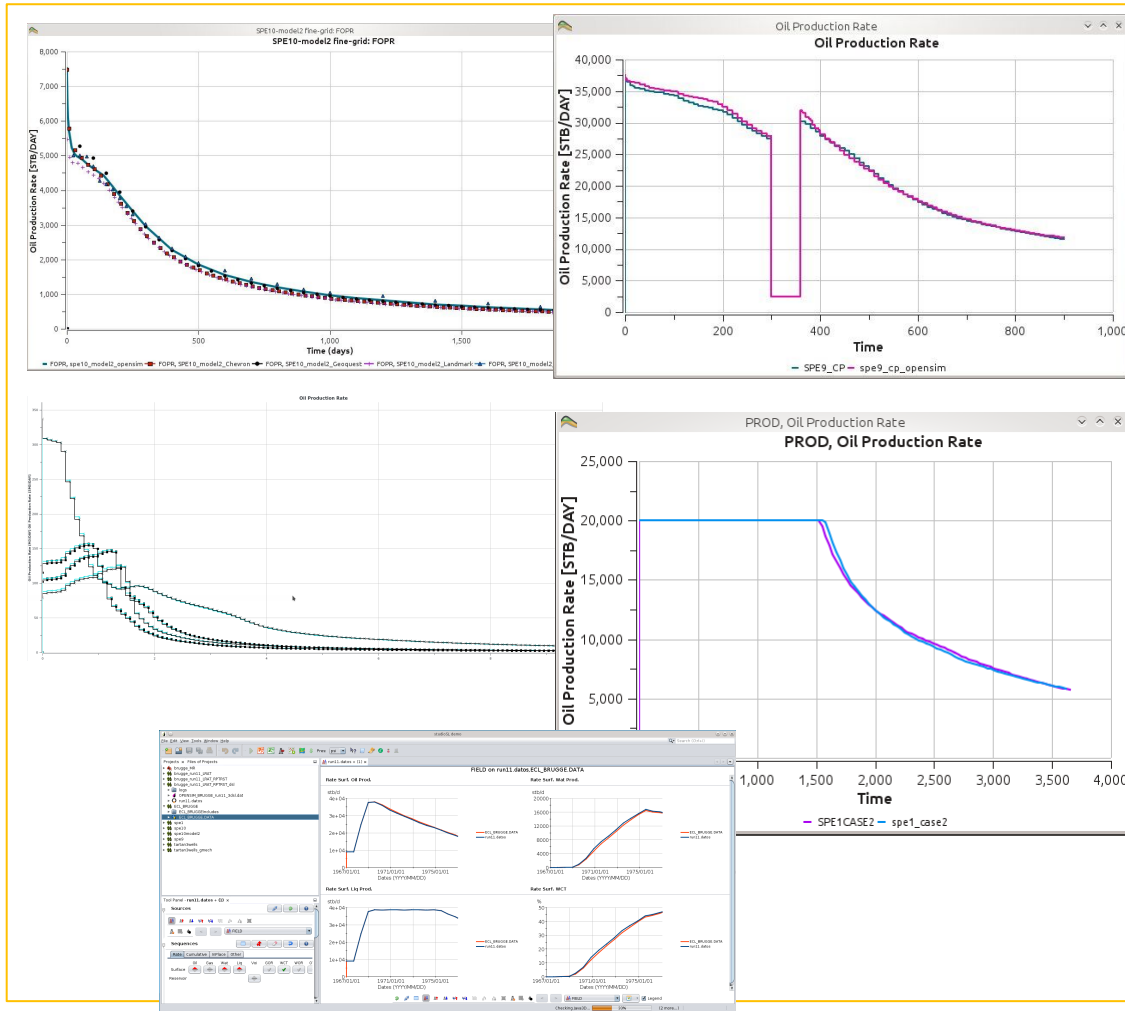
- Full physics **fracturing-to-production** simulation.
- **Fully integrated** reservoir, geomechanics and hydraulic fracturing simulation.
- Apply to advanced recovery processes such as **huff-n-puff**.

This is our technology or process



- **Efficient** proprietary simulator written in Fortran.
- **Handle most relevant physics.**
- **Test and validate** using public data
- Pre- and post- processors **leverage** on open source libraries.
- **High-level** Python implementation with open-source leverage.

How will it work? Is it working now?



- The simulator has been **tested and validated** using well-known public datasets (**Full SPE10 runs in 4h on a single core**).
- **Geomechanics coupling** has been implemented and tested.
- Runs on Linux and Windows.
- Server and node-locked licenses are available.
- It has been integrated with third-party software.

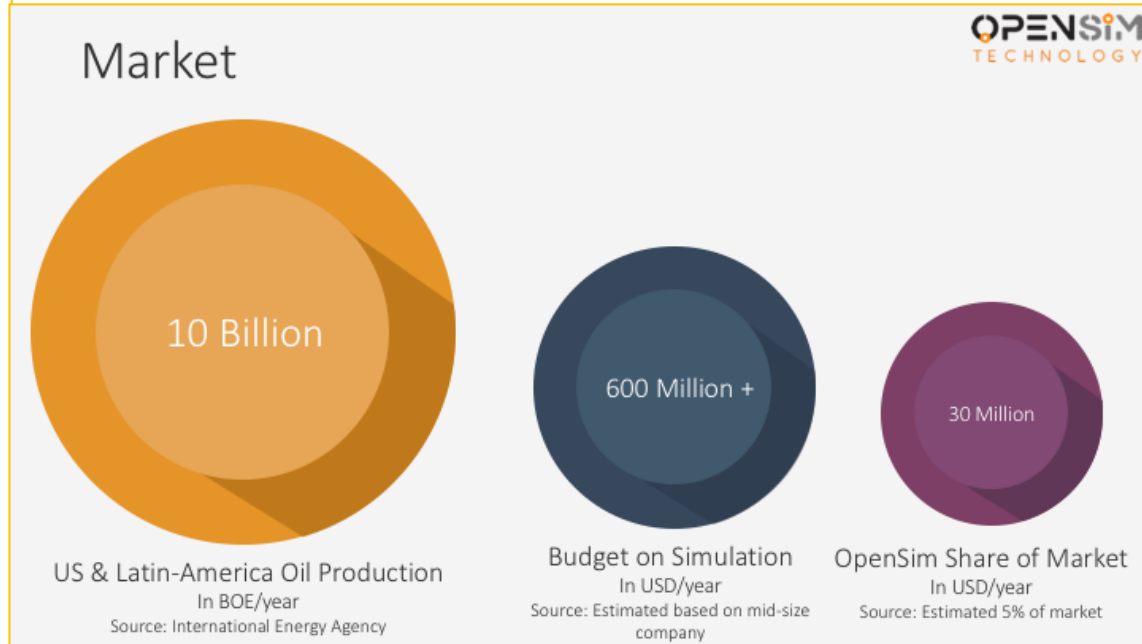
Short and Long-term plans

Short Term

- Basic Functionality in place by 2Q 2019
- Commercialize Product to generate revenues or obtain Funding.
- Engage on collaborative projects with oil and gas companies.
- Growth team from 3 to 6 people to accelerate new features and product customization.

Long Term

- Reach 5% of the reservoir simulation market
- Growth the company to 10-15 people.
- Produce Hybrid solutions: Simulation/AI
- Customizable workflows using the concept of Rapid Prototyping



- US & Latin-America market
- Small and Mid-Size Oil Companies
- Conventional and Unconventional Assets
- Initial target: 5% of the market in 5 years.

• Strengths

- Experience of 40+ years
- Innovation
- Python ecosystem
- Open Source Leverage
- High Tech, Low Cost Solutions

• Weaknesses

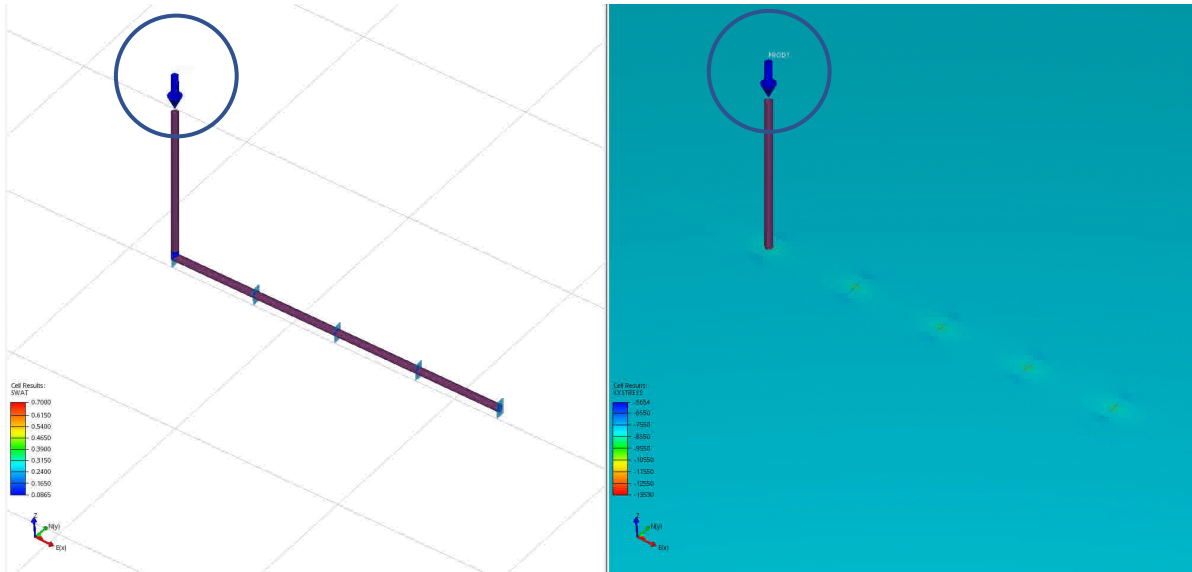
- Small Team
- Lack of funding

• Opportunities

- Recovery factor in Unconventionals is very low ($< 10\%$).
- Integrated multi-disciplinary solutions are in demand.
- Hybrid solutions: Simulation+AI
- More Physics required: Geomechanics, EOR, Phase Behavior

• Threats

- Competition may reach the same objective
- Oil Price goes down (again)



OpenSim Technology

1334 Brittmoore Rd. Suite 2611
Houston, TX 77043

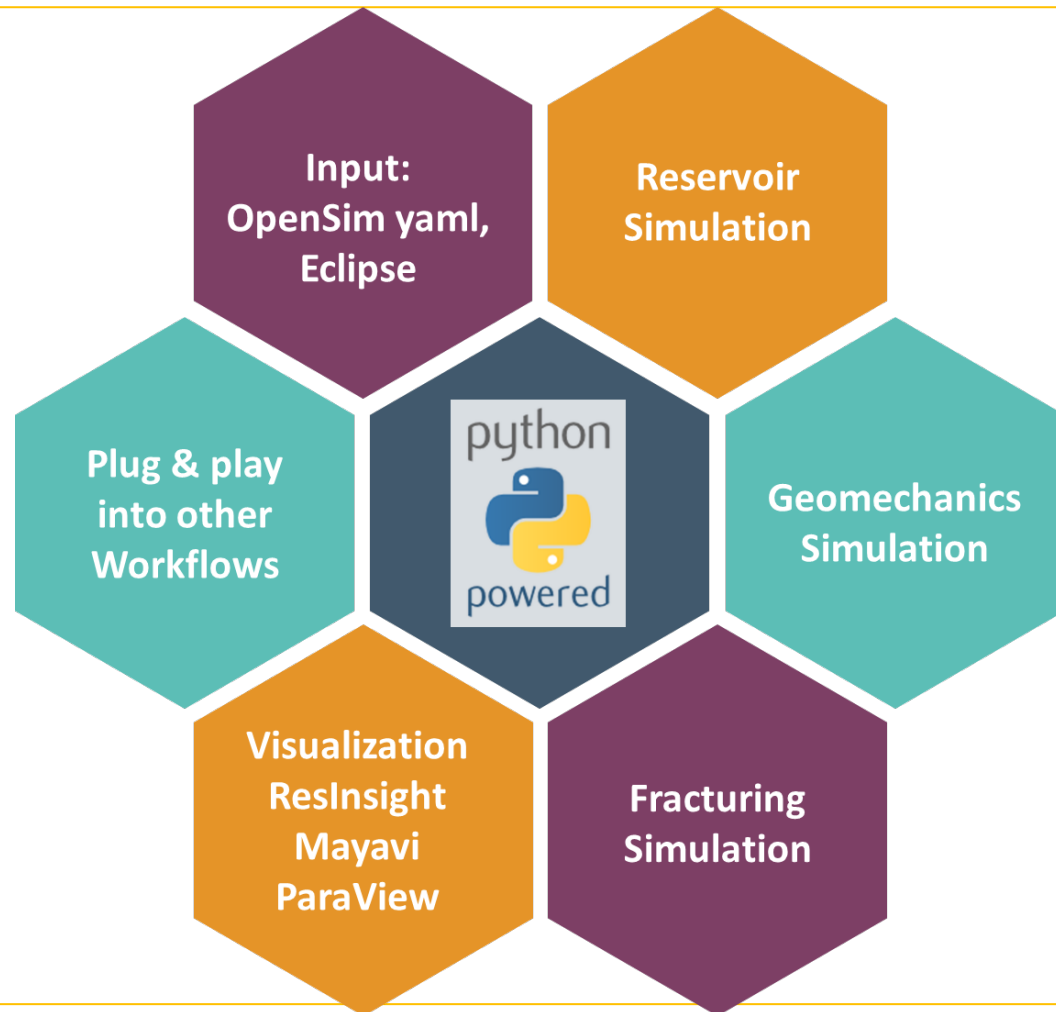


support@opensim.technology



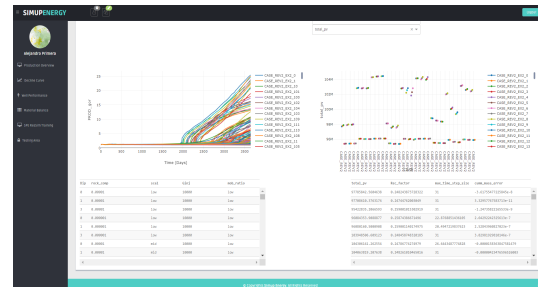
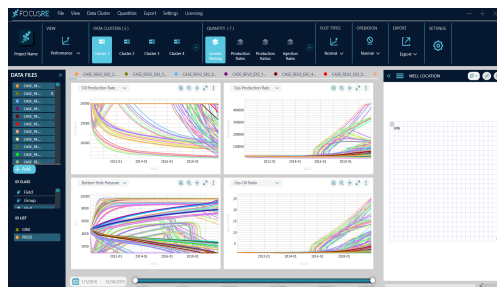
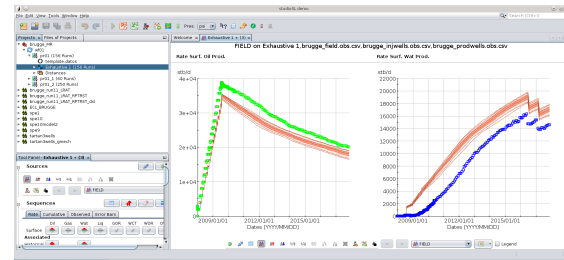
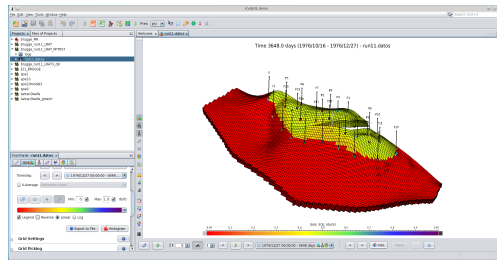
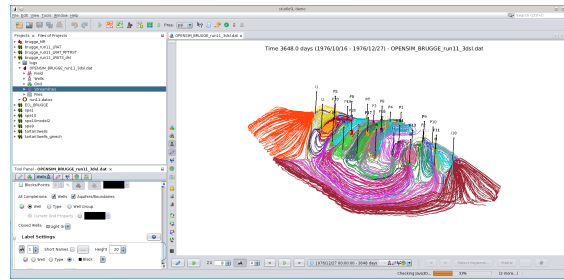
www.opensim.technology

This is our mission



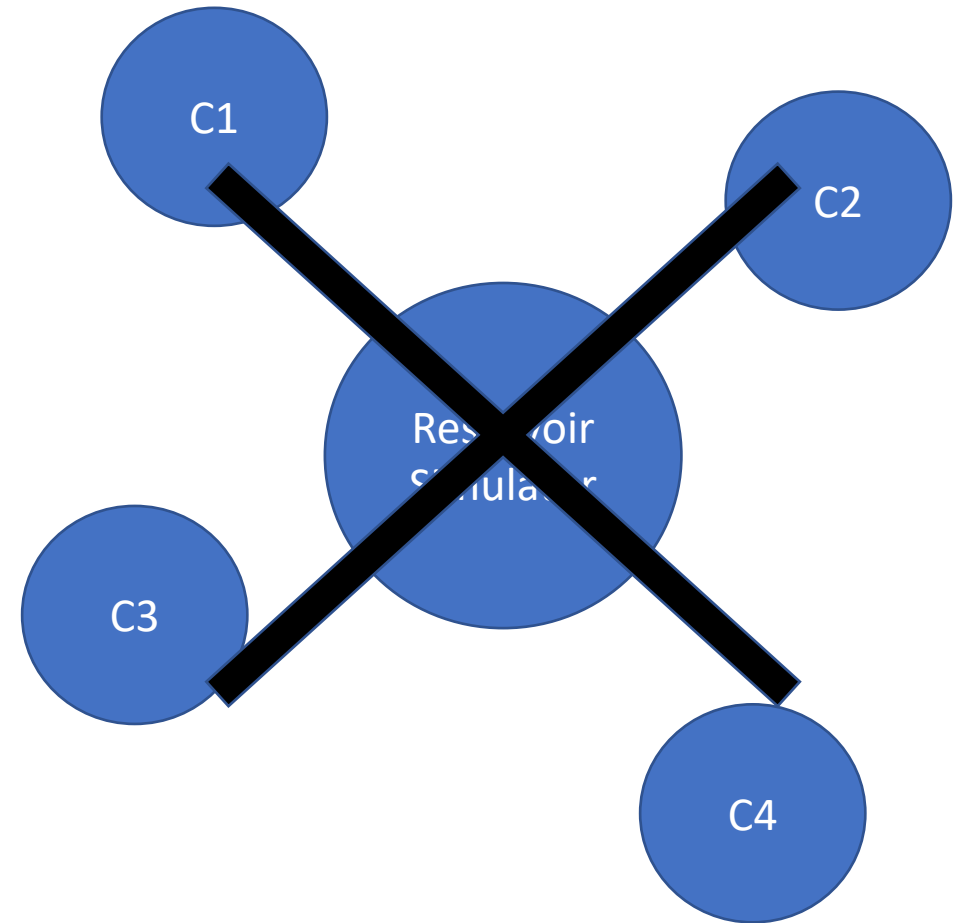
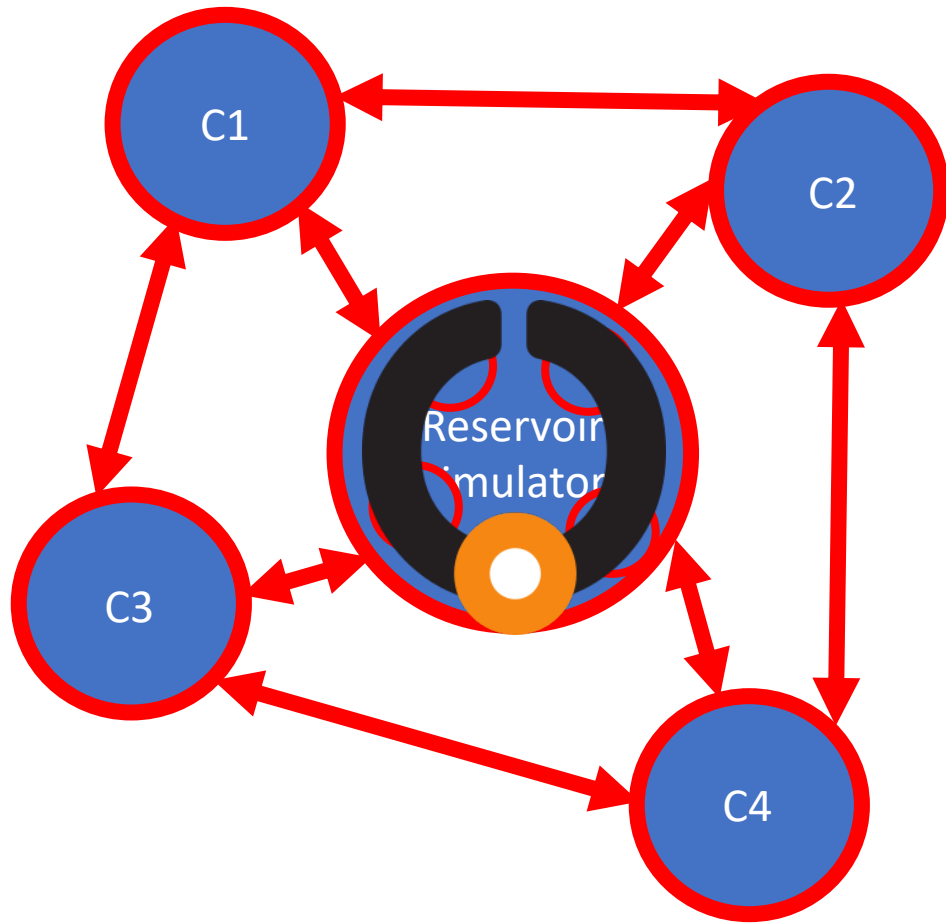
To develop state-of-the-art tools for Reservoir Simulation, Geomechanics and Hydraulic Fracturing with focus on integration, flexibility and short innovation cycles.

Here are examples of successes

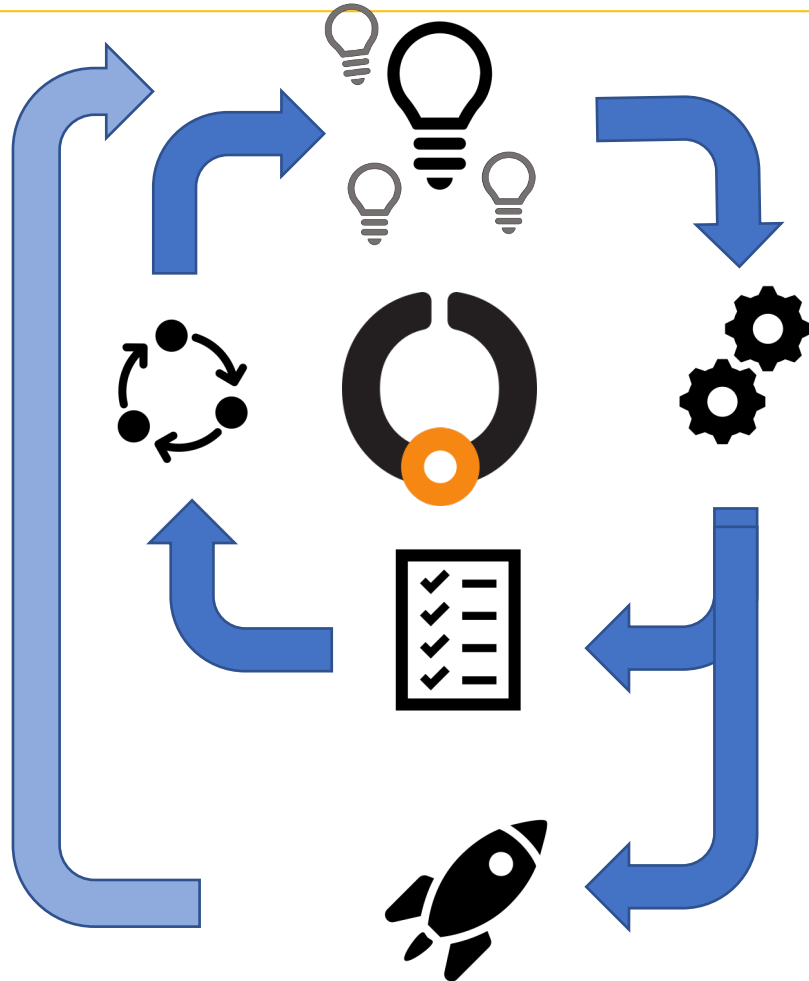


- With StreamSim Technologies:
 - Incorporation of OpenSim into StudioSL platform
- With Primera Resources:
 - Visualization and Analysis dashboards of ensembles of OpenSim simulation results, using FocusRE and SimUp tools.
- Have successfully ran most benchmark cases. Full SPE10 runs in about 4 hours on a single processor

This is our vision



This is our vision



- To create a new paradigm for reservoir simulation.
- To empower engineers and managers.
- Reduce the time required for innovation cycles.
- Provide Building blocks for rapid prototyping.
- Leverage on open-source technology

Action Steps



Find key partners



Increase outreach



Explore funding options



Provide demo licenses



Participate in meetings and conferences.



Implement additional capabilities